



Ginger Washing



Compact Washing System | 2.0m x 400mm Wide

Introducing KW's Newest Updated Unit: **Modular Belt Washing Conveyor**

- **Space-Saving Design:** Compact 2m x 400mm footprint fits easily into smaller processing spaces.
- **High Efficiency:** Processes up to 400 kg of ginger per hour, saving time and increasing productivity.
- **Durable Construction:** Full stainless steel frame ensures long-lasting performance even in demanding environments.
- **Versatile Applications:** Suitable for various products, including ginger, turmeric, custard apples, and oysters.
- **Customizable Water Options:** Can be set up to run to waste or connected to a 300L recirculation system, reducing water consumption.
- **Powerful Cleaning Capability:** Equipped with five spray bars (three above, two below), delivering 110 L/min at 300 PSI for thorough washing.
- **Adjustable Speed:** Variable speed drive allows precise control to match specific processing needs.
- **Easy Integration:** Designed to work seamlessly with existing systems, making installation simple and convenient.

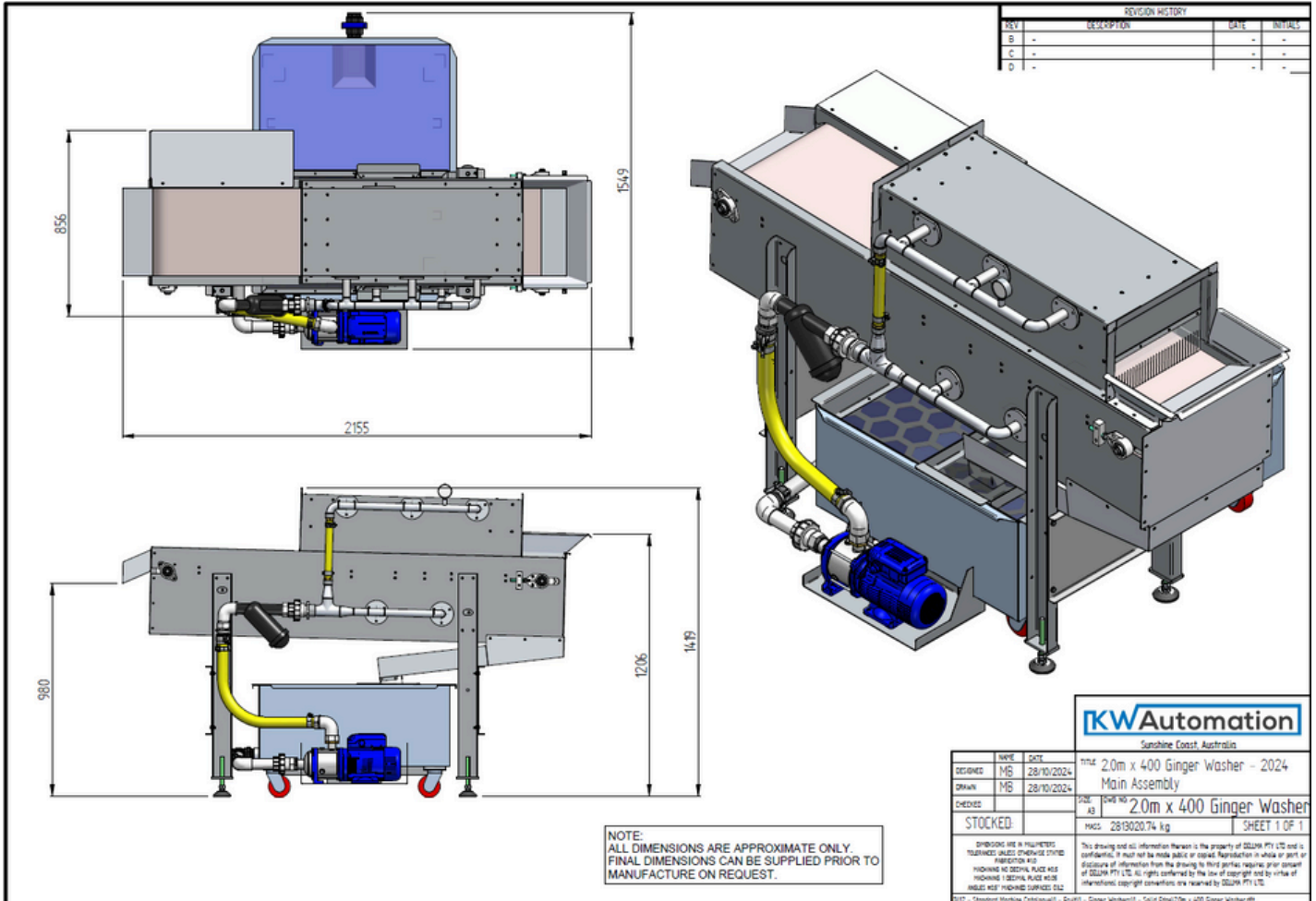
These benefits emphasize the washer's efficiency, versatility, and cost-effectiveness for customers.



Ginger Washing



2.0m x 400mm Floorprint



<https://www.youtube.com/watch?v=l4-GoS8OToE>

WWW.KWAUTOMATION.COM.AU